

Modern Fenix Full Wall Mount Vanity

Model: 822433

Collection: Blu Bathworks

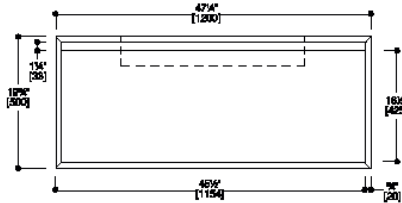
Origin: Italy

Description: Wall Mount Vanity w/ Black Matte Frame & Distressed Oak Front 47-1/4"W x 19-3/4"H x 20"D w/ Infinity Basin

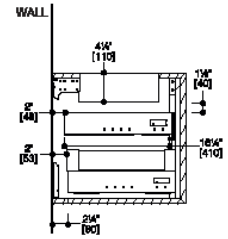


GENERAL FEATURES & SPECIFICATIONS

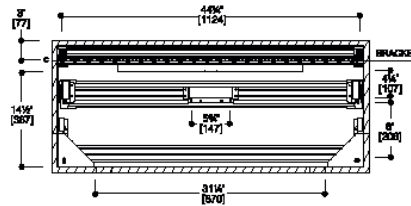
- Wall Mount Vanity
- Includes: Deep Drawer, Slim Drawer Insert, Infinity Basin Protective Mats, Dividers, 2-Storage Compartments, 2-Cosmetic Holders
- Integrated Infinity Style Basin with Central Drain Concealed by Sloped Cover (no overflow)
- 47-1/4"W x 19-3/4"H x 20"D
- Slim Inner Drawer Designed for Plumbing Clearance
- Two Lower Angles Feature a Unique 45 Degree Join
- Recessed Integral Finger Pull Channel with Hettich Soft Close System
- Material: Fenix NTM
- Finish: Black Matte Frame & Distressed Oak Front



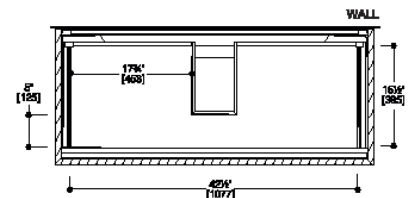
FRONT VIEW



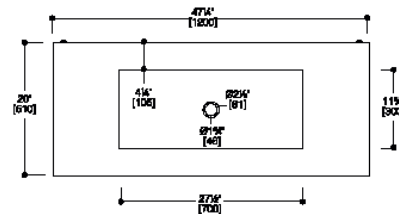
SIDE VIEW



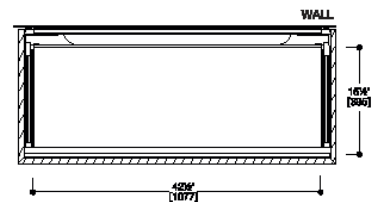
WALL DRILLING SCHEME FOR VANITY



TOP DRAWER VIEW



VANITY TOP VIEW



BOTTOM DRAWER VIEW

Codes/Standards:

ADA, ASME A112.19.2, IAPMO/cUPC, ICC/ANSI A117.1, CSA B 45, Fixture Dimensions and Hydraulic Performance meet or exceed ANSI/ASME standard A112.19.2, A112.19.9M, and CAN/CSA B45 requirements



We cannot guarantee the accuracy of this information. Dimensions are nominal – for guidance only and are not to be used for pre-installation.

For further information call 312.832.9000 or visit us at hydrologychicago.com